

# LIBRARY 21C 1ST FLOOR

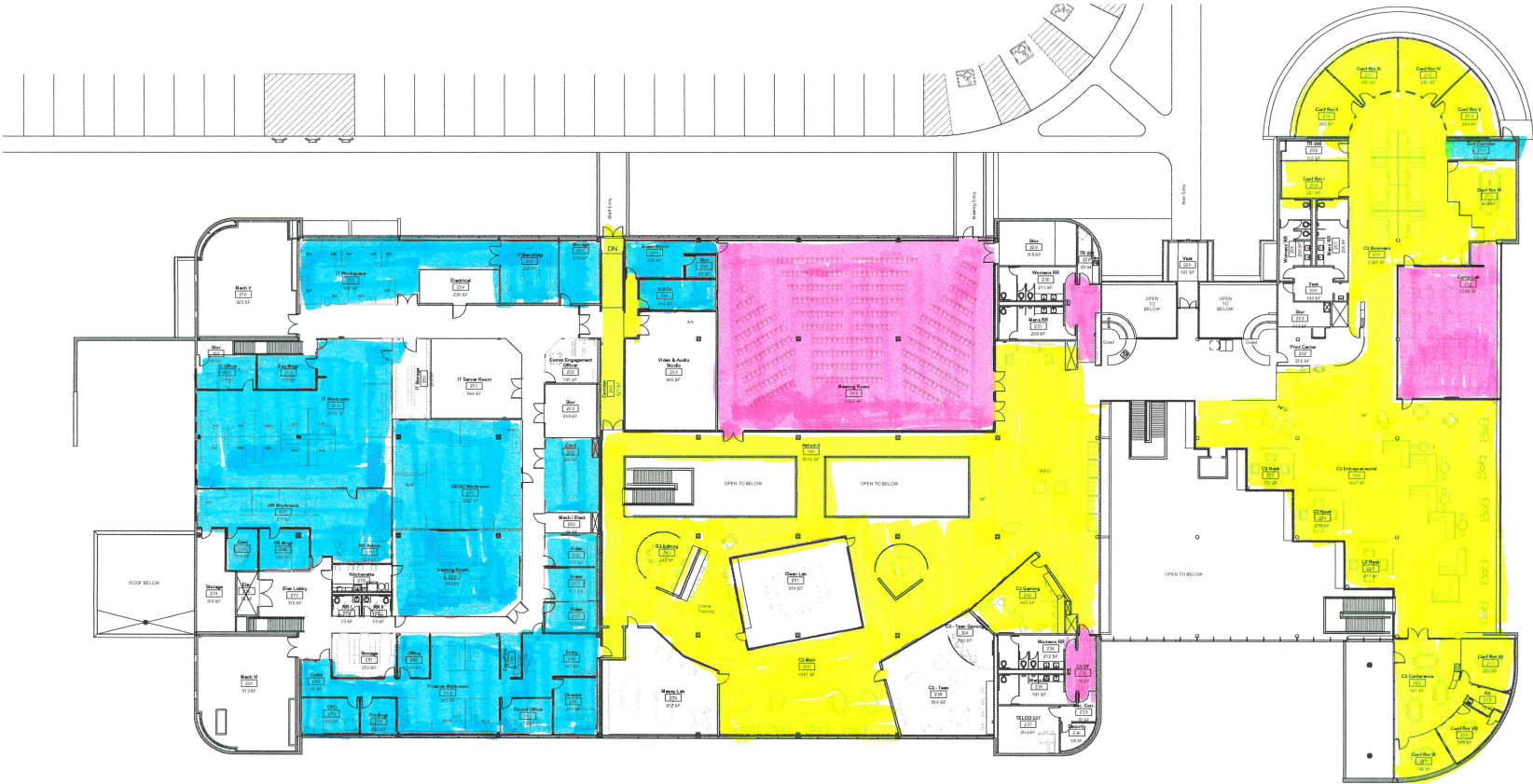
PPD North Facility  
Level 1 Floor Plan  
1/16" = 1'-0"  
13-0805



- Low
- Medium
- High

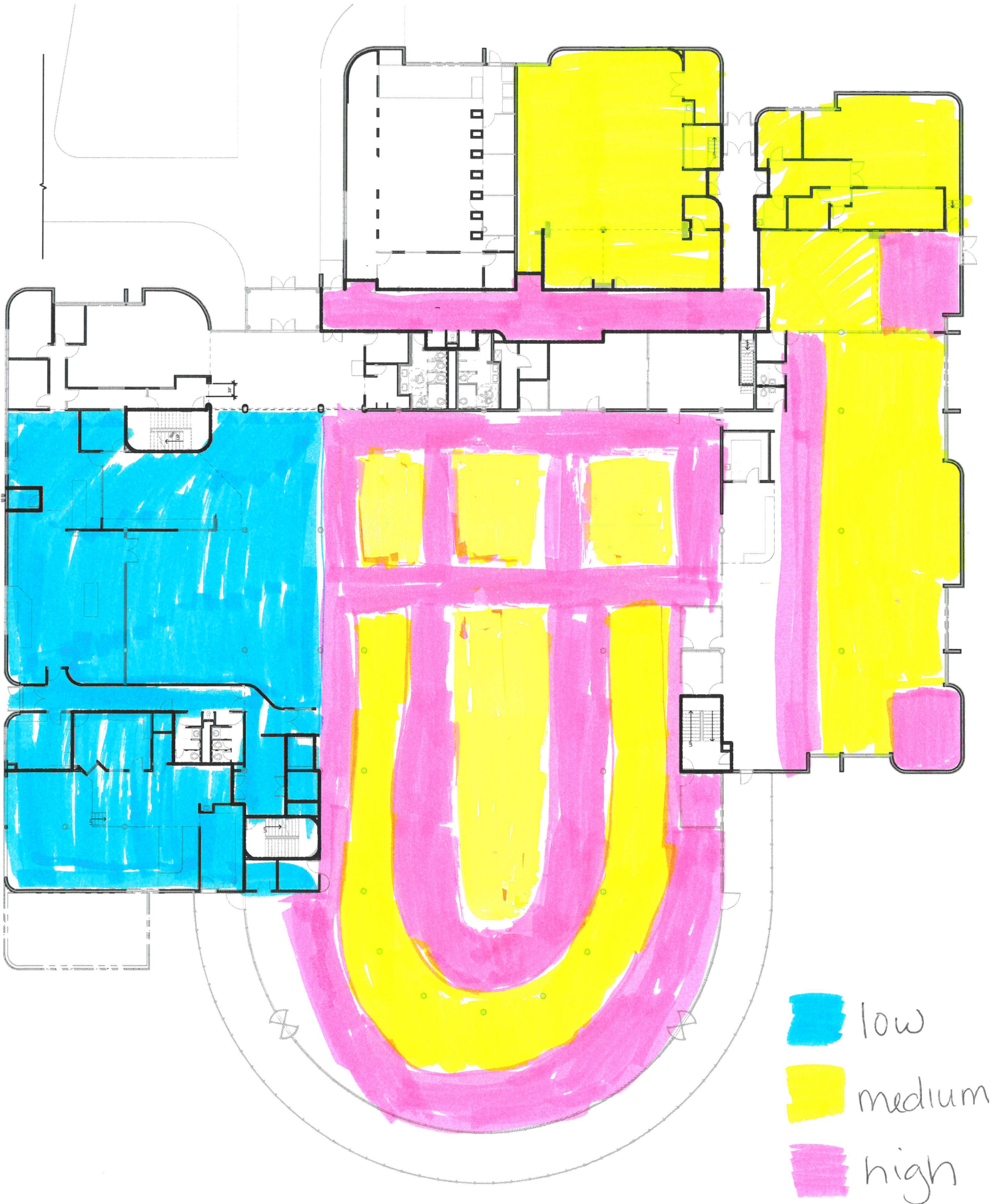
# LIBRARY 21C 2ND FLOOR

PPLD North Facility  
Level 2 Floor Plan  
1/16" = 1'-0"  
13-0805



-  Low
-  Medium
-  High

EAST LIBRARY  
MAIN

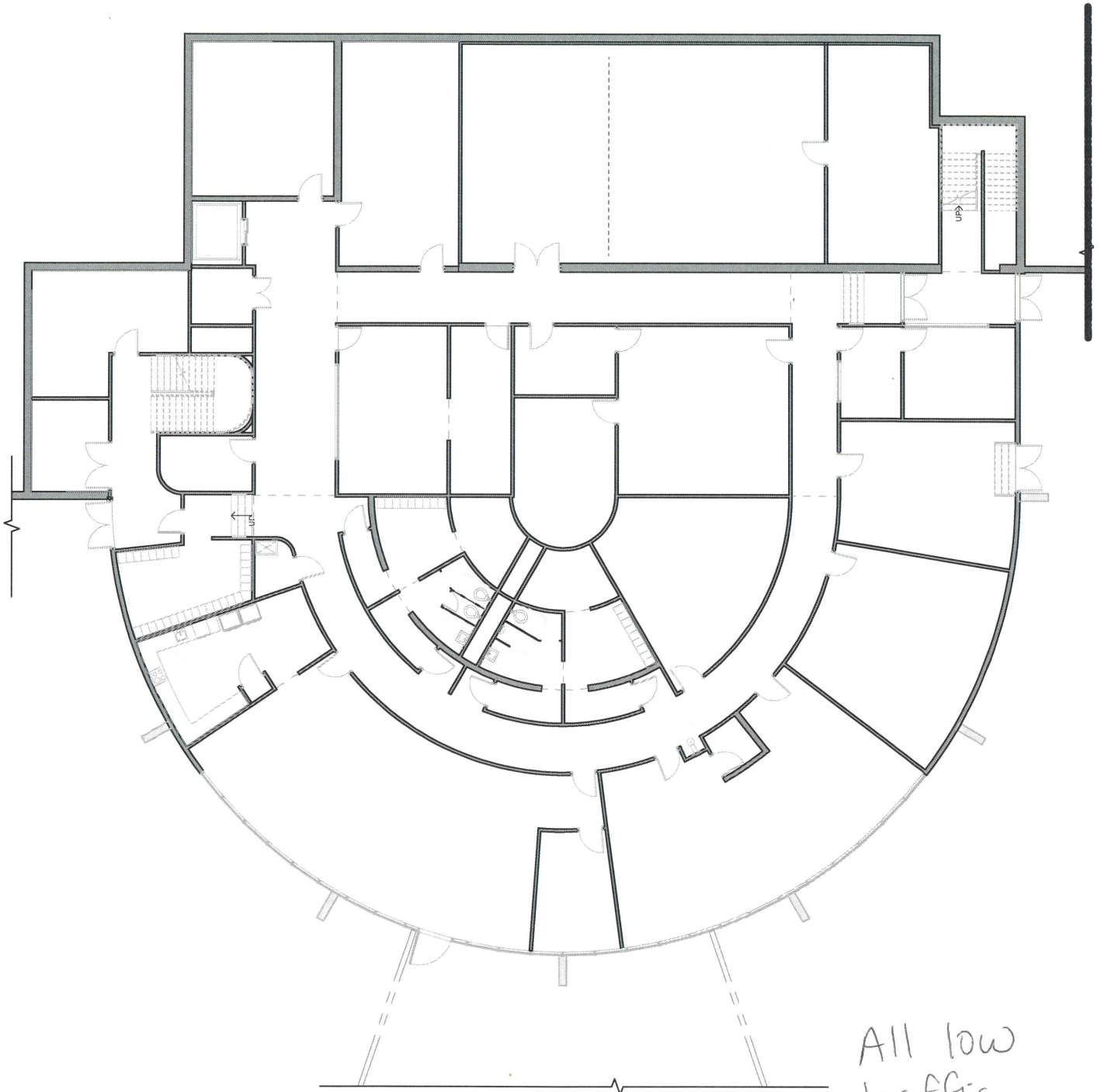


EAST LIBRARY  
2ND FLOOR



high  
traffic

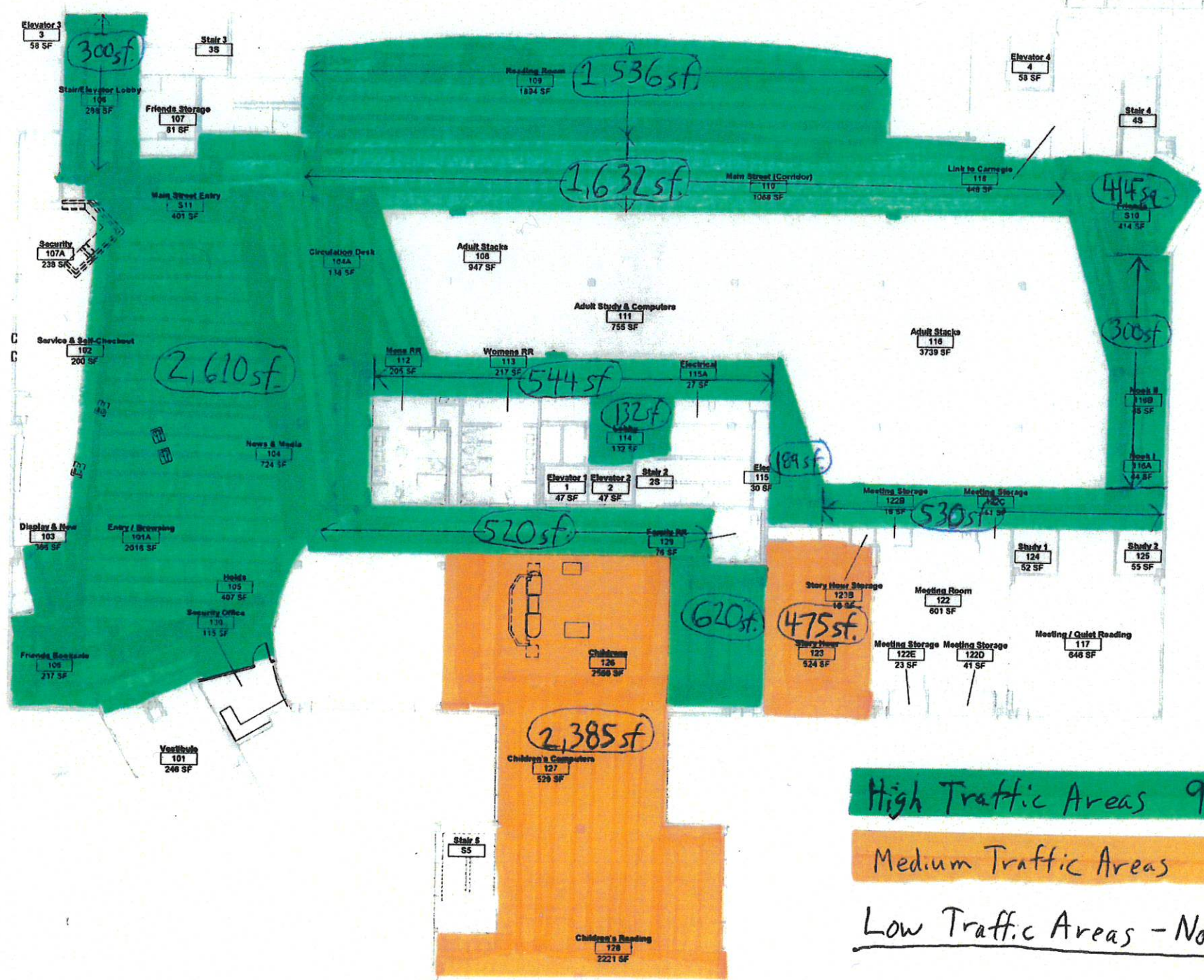
EAST LIBRARY  
BASEMENT



All low  
traffic



# PROPOSED CARPET CLEANING AREAS



High Traffic Areas 9,327 sq.

Medium Traffic Areas 2,860 sq.

Low Traffic Areas - Not Highlighted

Penrose Library  
Campus Improvements  
- Penrose

Date	Revised	By

**HUMPHRIES POLI ARCHITECTS**  
All reports, plans, specifications, computer files, field notes, notes and other documents and instruments prepared by the Architect as instruments of service shall remain the property of the Architect. The Architect shall retain all copyright laws, patents and other reserved rights, including copyright therein.

PENROSE LEVEL 1  
FLOOR PLAN

CONSTRUCTION DOCUMENTS  
10 AUGUST 2018

PROJECT No.	DESIGNED BY	PROJECT MANAGER	CHECKED BY
30023	DN	MPS	LD

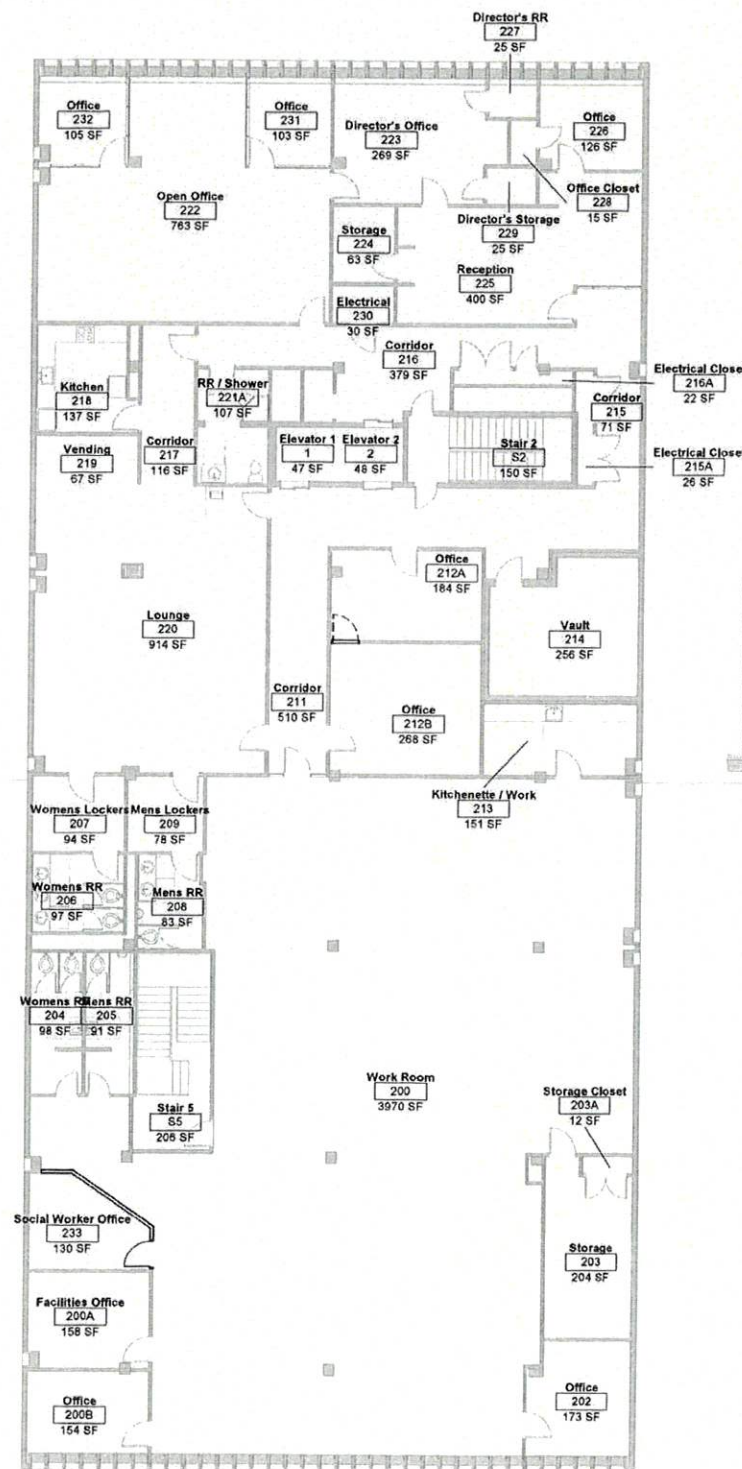
SHEET No.  
**A-101**

**WALL TYPES LEGEND**

—	Existing Wall/Partition to Remain
- - -	Existing Wall/Partition to be Removed
—	New Wall/Partition



# PROPOSED CARPET CLEANING AREAS



Low Traffic Area - 2nd Flr.

Date	Description	Date Issued

**HUMPHRIES POLI ARCHITECTS**

All reports, plans, specifications, computer files, field data, notes and other documents and instruments prepared by the Architect as instruments of service shall remain the property of the Architect. The Architect shall retain all common law, statutory and other reserved rights, including copyright therein.

**PENROSE LEVEL 2 FLOOR PLAN**

CONSTRUCTION DOCUMENTS  
10 AUGUST 2018

PROJECT NO.	DESIGNED BY	PROJECT MANAGER	CHECKED BY
38003	DH	MRS	LD

SHEET No.

**A-102**

**WALL TYPES LEGEND**

	Existing Wall/Partition to Remain
	Existing Wall/Partition to be Removed
	New Wall/Partition

